



# CREATIVE JUICES



Editor: Maryann Proctor

PO Box 1842, Sequim WA 98382

News@sequimarts.org

"Nothing in this world can take the place of persistence. Talent will not; nothing is more common than unsuccessful people with talent. Genius will not; unrewarded genius is almost a proverb. Education will not; the world is full of educated derelicts. Persistence and determination alone are omnipotent. The slogan 'press on' has solved and always will solve the problems of the human race." -- Calvin Coolidge

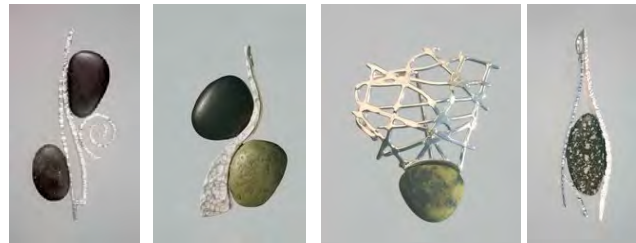
## Our January 22<sup>nd</sup> 2009 SA Meeting Demonstrator's are Coffee and Pat Miklos

### Cold Connections Can Be Hot"

A hands on presentation of jewelry techniques that do not require torch work. We hope to incorporate such techniques as rivets...tube rivets...piercing...drilling...hammering...texturing...folding...bending.

Coffee Miklos and his wife Pat discovered the beauty of the Pacific Northwest on a vacation in 2002. They moved to Dungeness (a tiny village just outside of Sequim, Washington) in 2005 and together formed "Dungeness Studios".

Coffee earned his Master's Degree in Jewelry Arts from Montana State and his primary focus for the following 25 years was in jewelry design for very upscale jewelry stores, winning national and international design competitions. While this allowed him to work with large budgets and some very fine gemstones, the high-end traditional fine jewelry stores he was working confined him from producing edgier pieces. Now that he has relocated to the great northwest he is pursuing his own images for the first time since graduate school...and loving his craft with a renewed spirit. The flow of water, the power and dynamics of wind and the dendrite patterns of trees and the ever-present microcosm of spirals have influenced his recent series of designs. Coffee uses a fairly structured approach to the design and execution of these pieces.



He keeps several sketchbooks going at one time. Some of these books lean more towards ideas and images while others concentrate on technical information and science. All of the work is hand constructed and so no two pieces are exactly alike. This current series contains a vocabulary of abstract images and vignettes that hopefully invite dialogue from the wearer.

Pat Miklos discovered she loved metalwork in college as an art major. She dropped out of college, attended a jewelry trade school, and started a 32 year career in the same type of upscale stores as a bench jeweler, working primarily in gold and platinum and as a stonemaker working mostly with diamonds and other very high end gemstone. Pat considers herself more of an excellent craftsman than an artist and says "I have an excellent eye and great handskills, but I tend to struggle to come up with ideas and don't have the drive to create that Coffee has, but I give him input on his ideas and have a lot more patience and skill at the boring parts such as finishing."


By Coffee and Pat Miklos

## Congratulations

Our Friend Barbara DePirro had a mentioned in an news article in the Wall Street Journal, Our Congratulations to Barbara. We are proud to know you.

<http://online.wsj.com/article/SB123085454543747621.html>

### AT WAMU IN JANUARY

Mary Franchini, Gail Larson and Joy Meyer had a great opening night at WAMU, despite my pitiful bungling while getting things started. These Ladies are  and handled the details without much from me. Thank you all for coming on opening night and making it a wonderful evening for them and Thank you to Mary, Gail and Joy for taking the reins and dealing with the details.

"If a man has talent and cannot use it, he has failed. If he has talent and uses only half of it, he has half failed. If he has a talent and learns somehow to use the whole of it, he has gloriously succeeded, and won a satisfaction and a triumph few men ever know." -- Thomas Wolfe, American Author

## COMING TO WAMU IN FEBRUARY

Kim Attwooll and Renne Brock-Richmond

Please remember First Friday Art Walk on February 6th. their opening night. I hope to see you there. I will have the sign up list for the monthly show at WAMU at the January 22<sup>nd</sup>. meeting please sign up for this wonderful show. We all need to show our work and get it out where it can be seen. If you don't see how showing at WAMU can help you read the article below. Oh and if you didn't know I also sold a piece from being on display there.

MP

**PRISCILLA PATTERSON** sold two of her seven paintings that were on display at Washington Mutual in December, and a third sale is pending. WAMU is a really nice venue to display and sell our work, and we are appreciative of the opportunity. It is a good idea to include the names of any memberships in organizations (like SEQUIM ARTS!) and/or galleries that we are a part of on our publicity sheets. If someone sees your work at the bank, they may decide to follow you to one of your other exhibits. (*Priscilla said that this is someone who would not ever go into a gallery.*) Ed.

### It is time to Pay your Dues

January is here and that means a new year for Sequim Arts. Please remember to pay your dues. \$30.00 for a Single and \$40.00 for a couple. Also if you want your name to appear in the Membership Booklet that comes out in March your dues must be paid before March 1<sup>st</sup>. Cutoff date. Thank you, Maryann Proctor Membership/Newsletter

"Don't say you don't have enough time. You have exactly the same number of hours per day that were given to Helen Keller, Pasteur, Michelangelo, Mother Teresa, Leonardo da Vinci, Thomas Jefferson, and Albert Einstein."  
-- H. Jackson Brown

### We will miss our Sequim Arts Member.....Pat Belson

It is a sad thing to have to deal with but on December 10<sup>th</sup> we lost a good friend to Sequim Arts, Pat Belson. Pat was 76 years old at her passing from emphysema and skin cancer. I am sorry that we could not come up with a photo of her, but she was so private that she didn't like photos taken of her, she also didn't want anything about her passing in the news papers as her sister Barbara told me. Pat was an asset to Sequim Arts and her smile and encouragement could always be counted on and will be greatly missed.

She was a very talented Artist as you can see from the photos below. She taught watercolor painting and I can tell you I will never look at the shoreline the same again after the demo she did for Sequim Arts. She described the animals that she saw in the reflections of rocks in the water, *she mentions that below*. That description has stayed with me ever since that demo at Sequim Arts and I was grateful that she brought it to our attention.

She has not been among us the past few years due to illness but she stayed a member she enjoyed getting our newsletter and kept up with our activities that way. I spoke to her a few months back and she told me then that she was dying and wanted to clean out her supplies so her sister would not have to deal with it afterward. I thought at the time, how sad but thoughtful it was for her family.

Even though she didn't spend time with us as before, her encouraging heart will be missed. *Good Bye Pat, we wish you fair skies and clear sailing.* Maryann Proctor, Editor of Creative Juices, SA Newsletter.



*Here is Pat's own description of herself and her work for you to see and read that was on our website.*

"Much of my artwork is based upon the patterns I see in nature, each scene revealing an interwoven tapestry. It is my hope that my paintings will draw the viewer into the



scenes, allowing ones own

imagination to wander within them.

My interest in rock/reflection patterns began in 1990, when my late husband and I enjoyed an extensive sailing trip to Desolation Sound and Princess Louisa inlet in British Columbia. I began sketching the water's edge in our first anchorage, in a tiny cove. I stopped to criticize the sketch, and Dogan and I simultaneously recognized images of birds, fish, butterflies, animals--an infinite number of shapes--formed by the combination of the rocks and their

mirrored reflections in the ever-so-stilled waters. It was as if we were viewing totem poles lying horizontally, one following another.

Since then I have found a plethora of similar patterns in still waters just about everywhere I travel. No longer having a sailboat, I frequently sketch while venturing out in my canoe. But I also enjoy portraying wildlife, landscapes, pets, and a variety of seascapes.

Drybrush watercolor has become my preferred medium to capture the depth and detail of the subjects I portray.”

### [Comments from a few of our members regarding Pat:](#)

Just a couple of notes regarding Pat: Aside from being such a complete artist, she:

- 1) Loved the country of Turkey --She and her deceased husband Dom, who was Turkish, spent 6 months of every year there until he died.
- 2) She ran a deli in the little purple house on 101 near the Sequim Bay state park that specialized in hard to find spices and other items; and
- 3) She made wonderful turkey and noodle soup that was always topped with Swiss chard and Romano cheese.  
-- Barb Boerigter

She was one of the first people I took art lessons from after moving to Sequim. I admired her work very much; she had such a unique style of her own. -- Mary Marsh

I was so sorry to read the news about Pat. She was one of the original Blue Whole members. I loved her somewhat "salty" personality, and her painting was magnificent! The time I got to know her best was during a slow afternoon at a Sequim Christmas craft festival where we shared a booth with our art. At that time, we had quite a few life experiences in common, and it was good sharing them with a kindred soul.

Diane Johnson, Ph.D.

DISCOVERY CENTER for Behavioral Health

Pat had the most optimistic outlook and robust laugh for a tiny lady that I ever heard. She'd had many medical and personal challenges, but always looked for the next adventure. Her detailed paintings spoke to her ability to center herself and get involved in the creative process... perhaps using it as a tool to over-ride pain.

I really enjoyed all my time with her. A wonderful talent and an astute business person.... not always found in artistic individuals. She'll be missed. – Melissa Penic

Randy and I will miss Pat's talent and kind thoughtful demeanor in our community. With warm memories,  
-- Sallie Radock

What I remember about Pat was her talent. One time I saw her demonstrate her painting - she would start at the top with fine brush and draw with watercolor details in the painting she had in mind. They are incredibly detailed watercolors of mostly trees, rocks, etc., reflected exactly in water. She said she would go out in a canoe or boat and take photos of scenes that impressed her. What patience she had doing those large paintings. May the good Lord bless her for her devotion to her art. Sincerely, -- Ruth McNicholas

## Announcements

### SEQUIM ARTS 2009 JURIED SHOW



Linda Okazaki  
Juror

The Sequim Arts Juried Show Prospectus and Entry Form are soon to be available online and will be available at our January meeting. Forms will also be sent out in the February newsletter. The deadline for entries is March 15. The show runs from May 7th to May 10th. For more information please call or email Linda Stadtmiller at 681-4884 or [lastadtmiller@tfon.com](mailto:lastadtmiller@tfon.com) or check out the Prospectus soon to be online at [www.sequimarts.org](http://www.sequimarts.org)

Beth and Linda hope to see many of you entering this year.  
Thanks Beth Taylor and Linda Stadtmiller, show chairs.

[WATERFRONT ART GALLERY](#) has moved to 120 W 1st St in Port Angeles. We hope to have the grand opening **SECOND FRIDAY** in FEBURARY. Please put Friday, Feb 13, on your calendar and join the festivities.

Most of the artists at the Waterfront Gallery are members of Sequim Arts. The Gallery is looking for 3-D artist to join the co-op. Metal, Glass, Wood, Abstract and more are invited to jury in.

Please contact Dee Green, 360-457-4324 or email [deesota1@msn.com](mailto:deesota1@msn.com) or Donna Standerwick, [laughingloon@dstanderwick.com](mailto:laughingloon@dstanderwick.com) for information and an application.

## Classes - Opportunities for Learning

### Collage Class January 19 - February 16, 2009

A series of 5 3hr. Collage classes will be held at Mary Franchini's studio located at 53 Greywolf Air Court in Sequim, Monday Jan. 19, 26, and Feb. 2, 9, 16. Time is from 9:30-12:30. Please call Mary Franchini at 681-0895 to sign up and receive a basic supply list. The cost is \$10 for single classes or \$45 for all 5 classes.

Also starting on Tuesday, February 17-March 24 is a series of 6 3hr classes 9:30-12:30 using Betty Edwards book, "Drawing on the Right Side of the Brain". Call for more information and supply list. The cost will be \$10 per session. Hopefully you will be able to take them all because they each build on the previous one.

### *Walking in This World, The Practical Art of Creativity.*

FREE, no charge: For a fun, powerful adventure into your own creativity:  
I am facilitating a second group based on Julia Cameron's second Artist's Way style book:

Group Begins with Intro Meeting: Monday March 2, 2009, for 12 weeks, ending the first week in June  
2:00pm to 4:00pm Where: at my studio  
Cynthia Thomas, 180 S. Scott Dr. Sequim  
People interested: Please e-mail or call [cynthia@MLCE.net](mailto:cynthia@MLCE.net) 360-681-4240

"Balance, peace, and joy are the fruit of a successful life. It starts with recognizing your talents and finding ways to serve others by using them." -- Thomas Kinkade

## TRIPS WITH BARBARA

SEATTLE ART MUSEUM AND FRYE ART MUSEUM  
FRIDAY FEBRUARY 27, 2009  
DEADLINE FEBRUARY 13, 2009  
COST \$ 60.00 INCLUDES ADMISSION AND DOCENTS FEE'S AT SAM  
BUS, PASSENGER AND FERRY FEE'S  
BUS WILL LEAVE WAL-MART AT 06:45 AM  
SUNLAND AT GATHERING PLACE AT 07:00 AM  
TOWN ON BLAKE ROAD BEHIND CLALLAM TITLE 07:10 AM  
WE WILL LEAVE SEATTLE AT 3:00 PM SO WE CAN HOPEFULLY MAKE THE 3:50 PM FERRY  
THERE ARE TWO NEW EXHIBITS AT SAM THE FIRST IS CALLED LIFE, LIBERTY AND THE PURSUIT OF HAPPINESS: AMERICAN ART FROM THE YALE UNIVERSITY ART GALLERY  
SECOND-GEORGE deFOREST BRUSH: THE INDIAN PAINTINGS AS WELL AS EDWARD HOPPER'S WOMAN.  
AT FRYE -THE MUNICH SECESSION AND AMERICA ALSO TRANSATLANTIC: THE AMERICAN ARTISTS IN GERMANY  
PLEASE SEND CHECKS PAYABLE TO BARBARA HUTTER AT P.O. BOX 1634 SEQUIM 98382  
CALL ME FOR RESERVATIONS OR QUESTIONS 683 4743  
I WOULD SUGGEST YOU GO ON THE SAM AND THE FRYE WEB SITE FOR MORE INFO  
THANKS BARBARA HUTTER